

DESIGN.

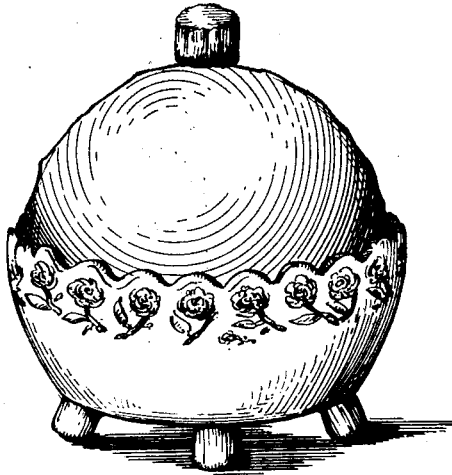
G. SHIKAKU.

FLY TRAP.

APPLICATION FILED JUNE 2, 1913.

44,645.

Patented Sept. 9, 1913.



Witnesses,

*Stalloneverde.*

Marie Battey

Inventor,  
by George Shikaku,

*Frank Stauser,*  
Attorneys.

# UNITED STATES PATENT OFFICE.

GEORGE SHIKAKU, OF LOS ANGELES, CALIFORNIA.

DESIGN FOR A FLY-TRAP.

44,645.

Specification for Design.

Patented Sept. 9, 1913.

Application filed June 2, 1913. Serial No. 771,320. Term of patent 14 years.

*To all whom it may concern:*

Be it known that I, GEORGE SHIKAKU, a citizen of Japan, residing at Los Angeles, in the county of Los Angeles and State of California, have invented a new, original, and ornamental Design for Fly-Traps, of which the following is a specification, reference being had to the accompanying drawings, forming part thereof.

The figure is a perspective view of my ornamental fly trap.

I claim:

The ornamental design for a fly trap as shown.

GEORGE SHIKAKU.

Witnesses:

IRIE WELCH,  
MARIE BATTEY.

Copies of this patent may be obtained for five cents each, by addressing the "Commissioner of Patents, Washington, D. C."